

YEAR

2023

LINK SMITHFIELD (from POK FU LAM RD to LUNG WAH ST)

COVERAGE (B) STATION

2407

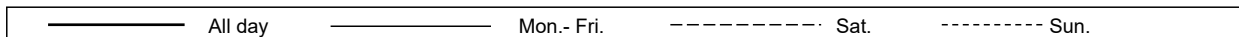
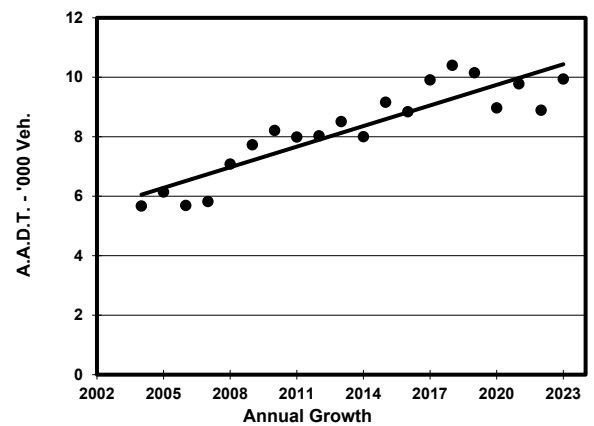
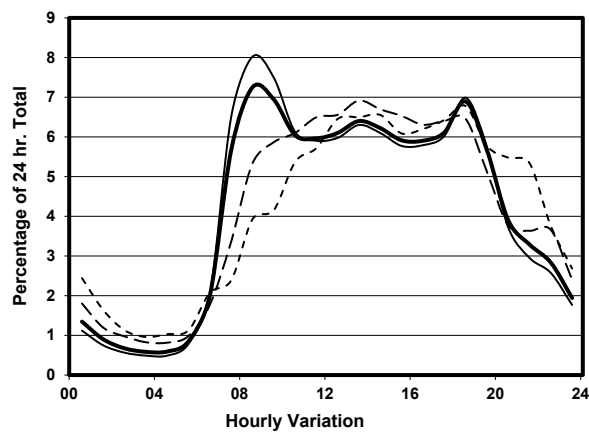
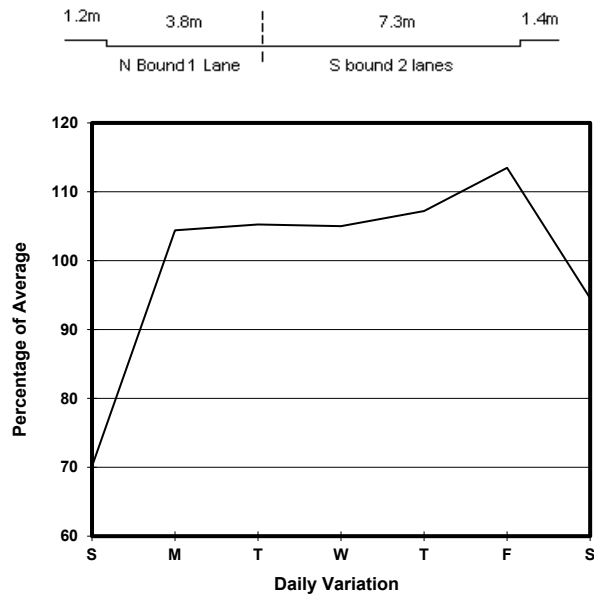
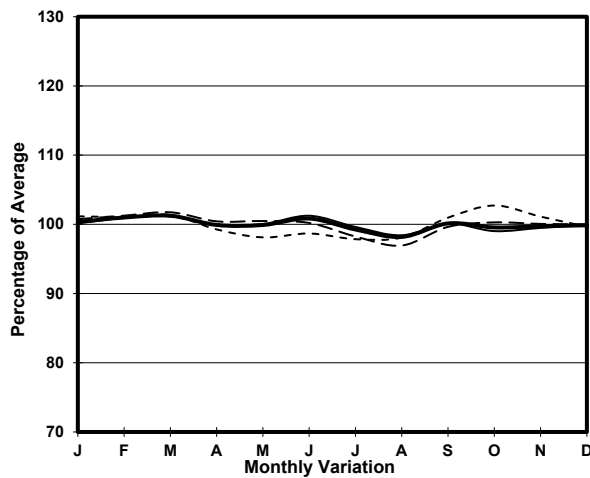
ROAD NETWORK

MAJOR

ROAD TYPE

DISTRICT DISTRIBUTOR

## 1. TRAFFIC FLOW VARIATION AND GROWTH



## 2. TRAFFIC CHARACTERISTICS (BY DIRECTION)

Parameter	All - Day	Mon. - Fri.	Sat.	Sun.
<b>SOUTH BOUND</b>				
A.A.D.T.	7500	8230	7090	5170
R 12 / 24 - %	76.1	77.7	73.7	66.3
R 16 / 24 - %	91.2	92.1	89.3	86.6
AM Peak Hour	0800-0900	0800-0900	0900-1000	0900-1000
One-way flow at AM peak hour	560	680	440	220
T - % (AM)	-	3.6	-	-
PM Peak Hour	1800-1900	1800-1900	1600-1700	1800-1900
One-way flow at PM peak hour	510	560	460	330
T - % (PM)	-	0.8	-	-
Prop.of commercial vehicles - 16 hr.	-	2.8	-	-
<b>NORTH BOUND</b>				
A.A.D.T.	2440	2590	2410	1960
R 12 / 24 - %	73.2	74.7	71.1	67.2
R 16 / 24 - %	90.9	91.9	89.1	87.8
AM Peak Hour	0800-0900	0800-0900	0900-1000	0900-1000
One-way flow at AM peak hour	160	190	120	80
T - % (AM)	-	7	-	-
PM Peak Hour	1800-1900	1800-1900	1700-1800	1800-1900
One-way flow at PM peak hour	180	200	170	150
T - % (PM)	-	2.1	-	-
Prop.of commercial vehicles - 16 hr.	-	4.2	-	-

## 3. OTHER INFORMATION AND COMMENT

**4. Vehicle classification and occupancy - Monday to Friday**

Time		Class of vehicle									
		Motor Cycle	Private Car	Taxi	Private LB	PLB	Goods veh.		Non Fr. Bus	Fr. Bus	
							Light	M & H		SD	DD
0700-0800	Pro	6.5	27.8	30.8	4.1	8.3	14.2	3.0	5.3	0.0	0.0
	Ocp	1.1	1.5	2.0	5.4	10.1	1.5	1.6	9.9	0.0	0.0
0800-0900 Peak hour	Pro	2.1	50.6	23.8	2.6	6.4	10.2	0.9	3.4	0.0	0.0
	Ocp	1.0	1.3	2.4	5.3	15.0	1.9	1.0	6.9	0.0	0.0
0900-1000	Pro	1.0	45.0	23.0	2.1	8.4	16.8	1.6	2.1	0.0	0.0
	Ocp	1.0	1.3	2.1	3.3	10.5	1.5	2.0	7.5	0.0	0.0
1000-1100	Pro	2.8	43.3	19.9	1.4	5.7	25.5	1.4	0.0	0.0	0.0
	Ocp	1.3	1.5	2.0	6.5	16.4	1.3	1.0	0.0	0.0	0.0
1100-1200	Pro	8.5	37.8	26.2	0.0	4.9	17.7	2.4	2.4	0.0	0.0
	Ocp	1.0	1.4	2.2	0.0	18.9	1.2	1.8	4.8	0.0	0.0
1200-1300	Pro	15.2	40.0	26.1	0.6	4.2	13.3	0.0	0.6	0.0	0.0
	Ocp	1.0	1.7	2.1	10.0	16.3	1.6	0.0	5.0	0.0	0.0
1300-1400	Pro	7.3	31.7	34.8	1.8	6.1	12.8	1.2	4.3	0.0	0.0
	Ocp	1.0	1.5	2.2	2.3	15.2	1.4	1.0	4.1	0.0	0.0
1400-1500	Pro	10.1	33.8	26.6	2.2	5.8	18.7	1.4	1.4	0.0	0.0
	Ocp	1.1	1.3	1.9	7.3	17.1	1.2	1.0	1.5	0.0	0.0
1500-1600	Pro	3.1	43.8	23.5	4.9	3.7	19.8	0.0	1.2	0.0	0.0
	Ocp	1.0	1.5	2.1	4.6	16.3	1.4	0.0	21.0	0.0	0.0
1600-1700	Pro	6.1	49.1	16.4	1.8	8.5	14.5	0.0	3.6	0.0	0.0
	Ocp	1.0	1.3	1.9	5.3	13.7	1.7	0.0	3.8	0.0	0.0
1700-1800	Pro	6.6	45.2	26.5	1.8	8.4	8.4	0.6	2.4	0.0	0.0
	Ocp	1.1	1.4	2.0	6.7	15.5	1.2	2.0	2.8	0.0	0.0
1800-1900	Pro	11.8	50.9	26.6	0.6	5.9	3.0	1.2	0.0	0.0	0.0
	Ocp	1.0	1.4	2.1	5.0	16.7	1.4	2.0	0.0	0.0	0.0
1900-2000	Pro	5.6	48.4	29.4	0.8	7.9	7.1	0.8	0.0	0.0	0.0
	Ocp	1.0	1.5	2.1	4.0	11.9	1.8	2.0	0.0	0.0	0.0
2000-2100	Pro	17.2	38.7	35.5	0.0	7.5	1.1	0.0	0.0	0.0	0.0
	Ocp	1.0	1.6	2.1	0.0	10.9	1.0	0.0	0.0	0.0	0.0
2100-2200	Pro	11.1	53.3	32.2	0.0	1.1	2.2	0.0	0.0	0.0	0.0
	Ocp	1.0	1.6	2.1	0.0	14.0	1.5	0.0	0.0	0.0	0.0
2200-2300	Pro	4.5	45.5	34.1	0.0	2.3	9.1	1.1	3.4	0.0	0.0
	Ocp	1.0	1.5	2.1	0.0	8.0	1.5	1.0	16.3	0.0	0.0
16 hours	Pro	7.0	42.8	26.5	1.7	6.2	12.7	1.0	2.1	0.0	0.0
	Ocp	1.0	1.4	2.1	5.2	14.1	1.5	1.5	7.1	0.0	0.0

**Legend: Pro.** Proportion of vehicles in % (Sum may not add up to 100% due to figure rounding)\*

**Ocp.** Average occupancy of vehicles including both driver and passengers\*

**M&H** Medium and Heavy

\* All traffic data are collected from combined bounds